



Spectrum 150180

200 kV

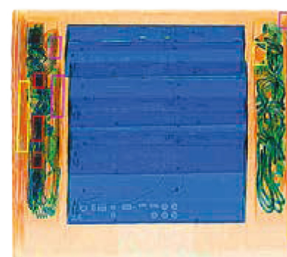
The Spectrum 150180 has been specially designed to meet the needs and applications of warehouses, carriers, forwarders and couriers for airports.

High Tech

- High image quality with a wire resolution of 36 AWG and steel penetration of 49 mm
- Meets all of the international standards for health and safety of operators and members of the public
- Drugs and explosives automatic detection and alarm
- Random projection of images containing fictitious threat objects for operator skills training (TIP function)
- Continuous or region zoom functions for easy and precise evaluation of the image
- Can export images in commercial file formats (JPEG, TIFF and BMP) onto a USB device
- Ergonomic keyboard and simple operator interface provide efficiency and ease for the operator.
- Hardware and software customized to meet customer requirements



Excellent image quality. Organic materials shown in orange, metal in blue and a mix of them in green.



Drug detection



General Specifications

- Tunnel size	1550 mm (W) / 1805 mm (H)
- Conveyor speed	0,20 m/s (Configurable)
- Conveyor height	340 mm
- Max load	3000 kg
- Standard generator	200 kV (Configurable)
- Wire resolution*	36 AWG
- Steel penetration*	49 mm
- Display monitor	LCD, colour, high-resolution (Configurable size)
- Cooling	Insulating oil with forced air cooling
- Beam direction	Diagonally upward

Standard Features

- Automatic colour coding of materials with different atomic numbers	- Continuous scanning
- Image auto save	- Network connection
- Baggage counter	- Scanning in real time
- Zoom higher than 64x	- High density alert
- Coloured or black and white image	- Self diagnostic system
- Edge enhancement	- Colour inversion
- High penetration function	- Image manipulation in real time
- Storage capacity above 200,000 images	- Automatic detection algorithm for drugs, explosives and high density materials
- Sharpness enhancement	- Threat image projection (TIP)
- Threat image projection (TIP)	- High density alert
- Image export to JPEG, TIFF and BMP	- Export to a secure VMI encrypted viewing application

Security

- Shield	Dose lower than 1 uSv / h at 0.1 m away from the equipment
----------	--

Optional Functions and Accessories

- Customized painting	- Remote management software
- Training software	- Tunnel extension
- Local language	- Touch screen monitor
- Remote workstation	- Ability to integrate with conveyor system
- Default test kit ASTM	- Modular roller table
- Anti-theft operation console with key	- Uninterruptible power supply

General Information

	Single View	Dual View
- Dimensions	5200 mm (L) / 2350 mm (W) / 2300 mm (H)	7100 mm / 2970 mm / 3000 mm
- Weight	2500 kg	
- Operating temperature / humidity	0°C ~ 40°C / 5% ~ 95% (non-condensing)	
- Storage temperature / humidity	-40°C ~ 60°C / 5% ~ 95% (non-condensing)	
- Power supply	127 Vac / 220 Vac 230 Vac (-15% ~ +10%); 50 Hz / 60 Hz, +/-3 Hz	
- Power consumption	2.5 kVA	

*According to VMI test piece

We reserve the right to change specifications without notice in order to provide all latest functions