

Spectrum 100100

160 kV | 180 kV

The spectrum 100100 is specifically designed to meet the needs and applications of airports, prisons, customs facilities, distribution centres, carriers, parcel services or wherever high security and total screening of a large variety of dimensions is required.



Spectrum 100100



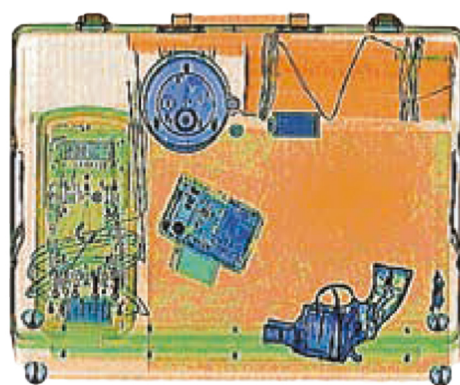
Spectrum 100100 H



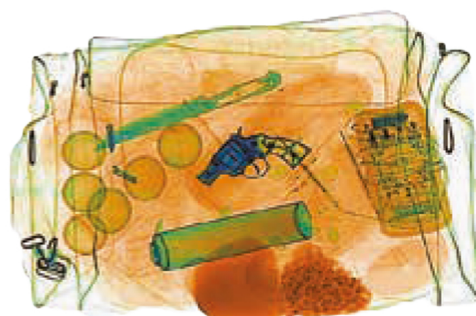
Spectrum 100100 DV

High Tech

- High image quality with a wire resolution of 40 AWG and steel penetration of 38 mm (160 kV) and 40 mm (180 kV)
- Meets all of the international standards for health and safety of operators and members of the public
- Drugs and explosives automatic detection and alarm
- Random projection of images containing fictitious threat objects for operator skills training (TIP function)
- Continuous or region zoom functions for easy and precise evaluation of the image
- Can export images in commercial file formats (JPEG, TIFF and BMP) onto a USB device
- Ergonomic keyboard and simple operator interface provide efficiency and ease for the operator
- Hardware and software customized to meet customer requirements



Excellent image quality. Organic materials shown in orange, metal in blue and a mix of them in green.



Drug detection



General Specifications

- Tunnel size	1010 mm (W) / 1005 mm (H)
- Conveyor speed	0.24 m/s (Configurable)
- Conveyor height	295 mm, 770 mm (100/100 H)
- Max load	200 kg
- Standard generator	160 kV operating at 150 kV
- High resolution generator	180 kV operating at 170 kV
- Wire resolution*	40 AWG
- Steel penetration*	38 mm (160 kV) / 40 mm (180 kV)
- Display monitor	LCD, colour, high-resolution (Configurable size)
- Cooling	Insulating oil with forced air cooling
- Beam direction	Diagonally upward

Standard Features

- Automatic colour coding of materials with different atomic numbers	- Image export to JPEG, TIFF and BMP
- Image auto save	- Export to a secure VMI encrypted viewing application
- Baggage counter	- Network connection
- Continuous scanning	- Scanning in real time
- Zoom higher than 64x	- Self diagnostic system
- Coloured or Black/White Image	- Colour inversion
- Edge enhancement	- Image manipulation in real time
- High penetration function	- Automatic detection algorithm for drugs, explosives and high density Materials
- Sharpness enhancement	- Storage capacity above 200,000 images
- Threat image projection (TIP)	- High Density Alert

Security

- Shield	Dose lower than 1 uSv / h at 0.1 m away from the equipment
----------	--

Optional Functions and Accessories

- Customized painting	- Anti-theft operation console with key
- Training software	- Uninterruptible power supply
- Local language	- Remote management software
- Remote workstation	- Tunnel extension
- Default test kit ASTM	- Touch screen monitor
- Modular roller table	- Ability to integrate with conveyor system

General Information

- Operating temperature/humidity	0°C - 40°C / 5% - 95% non condensable	
- Storage temperature/humidity	-40°C - 60°C / 5% - 95% non condensable	
- Power supply	127Vac / 220Vac / 230Vac (-15% - +10%); 50Hz / 60 Hz, +/-3Hz	
	160 / 180kV	Dual View
- Dimensions	3600 mm (L), 1300 mm (W), 1800 mm (H)	3800 mm, 1700 mm, 1240 mm
- Weight	950 kg	1800 kg
- Power consumption	750 VA	1 kVA

*According to VMI test piece

We reserve the right to change specifications without notice in order to provide all latest functions