



## Spectrum Cargo 7.5

7.5 MeV

The Spectrum Cargo 7.5 includes the most reliable linear accelerator delivering dual energy 7.5 MeV, allowing material discrimination, high steel penetration and throughput. Using the innovative automatic free-flow scanning procedure, guarantees a constant vehicle flow on site.

X-ray screening systems are designed to optimize security checks at ports, airports and border crossings. They can inspect whole trucks, containers and vehicles for explosives, narcotics, weapons of mass destruction and other contraband.





## General Specifications

- Speed	3 km/h - 15 km/h
- Maximum vehicle size	2.8 m (W); 4.6 m (H); Length: No limit
- Inspection method	Drive through
- Inspection flow	Up to 150 vehicles per hour (Vehicle with a 25 m container)
- Steel Penetration*	310 mm
- Beam energy*	7.5 / 4.5 MeV (Dual energy)
- Area of radioprotection	Width: 15 m; Length: 30 m
- Maximum dose absorbed by the driver	< 0.1 uSv / inspection
- Maximum dose for the operator	< 1 mSv / year

## Standard Features

- Image auto save	- Scanning in real time
- Zoom higher than 64x	- Self diagnostic system
- Edge enhancement	- Storage capacity above 50,000 images (Expandable)
- High penetration function	- Suspicious image tagging feature and image analysis report record
- Sharpness	- Cabin automatic detection
- Image export BMP, JPG	- 4 image viewing stations
- Export to a secure VMI encrypted viewing application	- Reports
- Network connection	

## Security

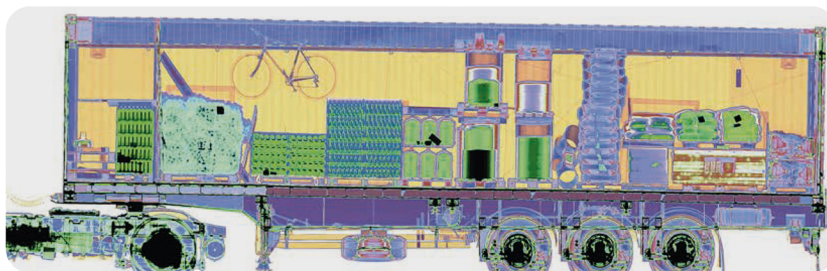
- Integrated sensors identify the drivers cabin automatically
- Electronic barrier for traffic control
- Traffic lights for automatic traffic control
- Video monitoring system with digital video recorder
- Radio communication system

## Installation Data

- Operating temperature	-20°C ~ +50°C (-30°C ~ +60°C optional)
- Storage temperature	-30°C ~ +55°C
- Humidity	0% ~ 99% (Non condensing)
- Power supply	380 Vac +/-10%, three-phase + earth, 50 Hz / 60Hz +/-1 (Voltage can be configured according to customer need)
- Power consumption	<20 kW

## Optional Functions

- Optional character recognition system (OCR)
- Radioactivity monitor
- Extra image analysis station
- Image storage
- Power supply stabilizer
- UPS



\*According to VMI test piece

We reserve the right to change specifications without notice in order to provide all latest functions