

## Spectrum 7560

160 | 180 kV

The Spectrum 7560 is specifically designed to meet the needs and applications of airports, prisons, customs facilities, distribution centres, carriers, parcel services or wherever high security and total screening of a large variety of dimensions is required.

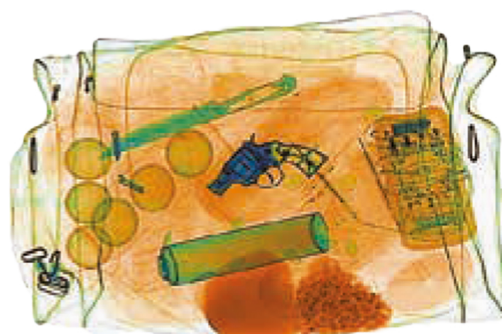


## High Tech

- High image quality with a wire resolution of 40 AWG and steel penetration of 38 mm (160 kV), 40 mm (180 kV)
- Meets all of the international standards for health and safety of operators and members of the public
- Drugs and explosives automatic detection and alarm
- Random projection of images containing fictitious threat objects for operator skills training (TIP function)
- Continuous or region zoom functions for easy and precise evaluation of the image
- Can export images in commercial file formats (JPEG, TIFF and BMP) onto a USB device
- Ergonomic keyboard and simple operator interface provide efficiency and ease for the operator
- Hardware and software customized to meet customer requirements



Excellent image quality. Organic materials shown in orange, metal in blue and a mix of them in green.



Drug detection



## General Specifications

Tunnel Size	752 mm (W) / 610 mm (H)
Conveyor Speed	0.24m/s (Configurable)
Conveyor Height	668 mm
Max Load	150 kg / 165 kg (Heavy duty roller optional)
Standard Generator	160 kV operating at 150 kV
High Resolution Generator	180 kV operating at 170 kV
Wire Resolution*	40 AWG
Steel Penetration*	38 mm (160 kV) / 40 mm (180 kV)
Display Monitor	LCD, colour, high-resolution (Configurable size)
Cooling	Insulating oil with forced air cooling
Beam direction	Diagonally upward

## Standard Features

- Image export to JPEG, TIFF and BMP
- Baggage Counter
- Continuous scanning
- Zoom higher than 128x
- Colored or black / white image
- Edge enhancement
- High penetration function
- Threat image projection (TIP)
- High density alert
- Automatic detection algorithm for drugs, explosives and high density materials
- Image auto save
- Network connection
- Scanning in real time
- Self diagnostic system
- Color Inversion
- Image manipulation in real time
- Sharpness enhancement
- Storage capacity above 200,000 images
- Export to a secure VMI encrypted viewing application
- Automatic color coding of materials with different atomic numbers

## Security

Shield Dose lower than 1uSv/h at 0.1m away from the equipment

## Optional Functions and Accessories

- Customized painting
- Training Software
- Local language
- Remote workstation
- Standard test kit ASTM
- Modular roller table
- Anti-theft operation console with key
- Uninterruptible Power Supply
- Remote management software
- Tunnel extension
- Touch screen monitor
- Ability to integrate with conveyor system

## General Information

Dimensions	2080 mm (L) / 1050 mm (W) / 1450 mm (H)
Weight	620 kg
Operating Temperature/ Humidity	0°C ~ 40°C/ 5% ~ 95% (Non-condensing)
Storage Temperature/ Humidity	-40°C ~ 60°C/ 5% ~ 95% (Non-condensing)
Power Supply	127 Vac / 220 Vac / 230 Vac (-15% ~ +10%); 50 Hz/60 Hz, +/-3Hz
Power Consumption	750 VA

\*According to VMI test piece

We reserve the right to change specifications without notice in order to provide all latest functions