



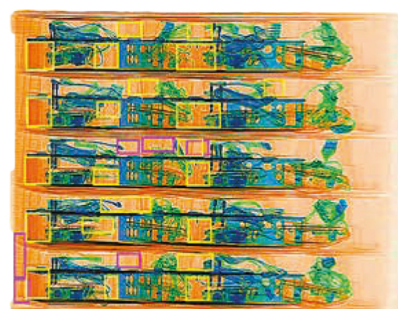
## Spectrum 180180

200 kV | 320 kV

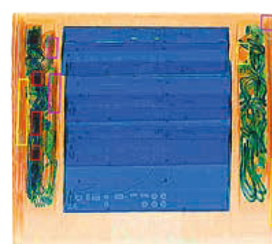
The Spectrum 180180 is an x-ray inspection system with a high level of performance, greater sharpness and image quality. It has been specially designed to meet the needs and applications of airports, customs services, transportation services, carriers, transportation operations or in any other environment where high security and complete screening is required.

## High Tech

- High image quality with a wire resolution of 36 AWG and steel penetration of 49 mm (SV) 70 mm (DV)
- Meets all of the international standards for health and safety of operators and members of the public
- Drugs and explosives automatic detection and alarm
- Random projection of images containing fictitious threat objects for operator skills training (TIP function)
- Continuous or region zoom functions for easy and precise evaluation of the image
- Can export images in commercial file formats (JPEG, TIFF and BMP) onto a USB device
- Ergonomic keyboard and simple operator interface provide efficiency and ease for the operator
- Hardware and software customized to meet customer requirements



Excellent image quality. Organic materials shown in orange, metal in blue and a mix of them in green.



Drug detection



## General Specifications

- Tunnel size	1810 mm (W) / 1805 mm (H)
- Conveyor speed	0.20 m/s (Configurable)
- Conveyor height	340 mm
- Max load	3000 kg
- Standard generator	200 kV (Configurable)
- Wire resolution*	36 AWG
- Steel penetration*	48 mm (SV), 70 mm (DV)
- Display monitor	LCD, colour, high-resolution (Configurable size)
- Cooling	Insulating oil with forced air cooling
- Beam direction	Diagonally upward

## Standard Features

- Automatic colour coding of materials with different atomic numbers	- Colour inversion
- Image auto save	- Image manipulation in real time
- Baggage counter	- Automatic detection algorithm for drugs, explosives and high density materials
- Continuous scanning	- Storage capacity above 200,000 images
- Zoom higher than 64x	- Coloured or black and white image
- Edge enhancement	- High penetration function
- Sharpness enhancement	- Threat image projection (TIP)
- High density alert	- Image export to JPEG, TIFF and BMP
- Network Connection	- Export to a secure VMI encrypted viewing application
- Scanning in Real Time	- Self diagnostic system

## Security

- Shield	Dose lower than 1 uSv / h at 0.1 m away from the equipment
----------	--

## Optional Functions and Accessories

- Customized painting	- Touch screen monitor
- Training software	- Ability to integrate with conveyor system
- Local language	- Remote workstation
- Default test kit ASTM	- Modular roller table
- Anti-theft operation console with key	- Uninterruptable power supply
- Remote management software	- Tunnel extension

## General Information

	Single View	Dual View
- Dimensions	6100 mm (L) / 3200 mm (W) / 2400 mm (H)	9000 mm / 3200 mm / 3000 mm
- Weight	3300 kg	6000 kg
- Power consumption	2 kVA	3.5 kVA
- Operating temperature / humidity	0°C ~ 40°C / 5% ~ 95% (Non-condensing)	
- Storage temperature / humidity	-40°C ~ 60°C / 5% ~ 95% (Non-condensing)	
- Power supply	220 Vac / 230 Vac 230 Vac (-15% - +10%); 50 Hz / 60 Hz, +/-3 Hz	

\*According to VMI test piece

We reserve the right to change specifications without notice in order to provide all latest functions